

462 Beaverhead Lane

Dillon, Montana

Offered at ~~\$269,500~~

Reduced to \$255,000

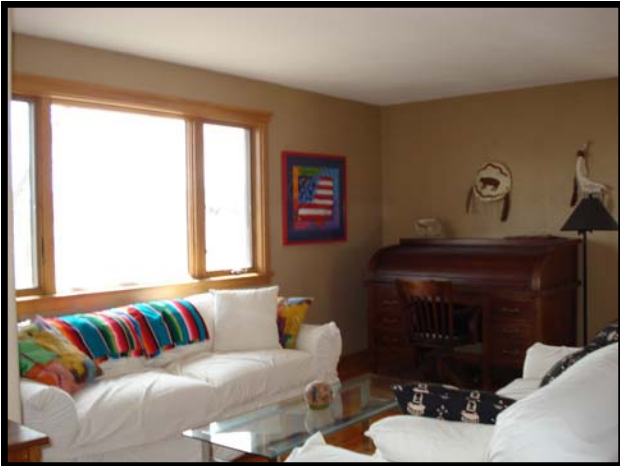
- 2,616± square feet
- 4 Bedrooms, 3 Bathrooms
- Situated on .788± acres
- Mature trees & landscaping
- New appliances & windows
- Finished two-car detached garage
- Rough sawn hardwood floors
- Ceramic tile in utility room & bathrooms
- New countertops with maple & walnut inlay
- Plenty of storage & room to expand

“Relax and enjoy this end of the road home. Updated throughout, with park-like setting, detached garage with game room or studio, hot tub area with pergola, private fire pit area and large deck. A must-see!”

2008 Taxes: \$1,398.91

Average Electric: \$95.78/month

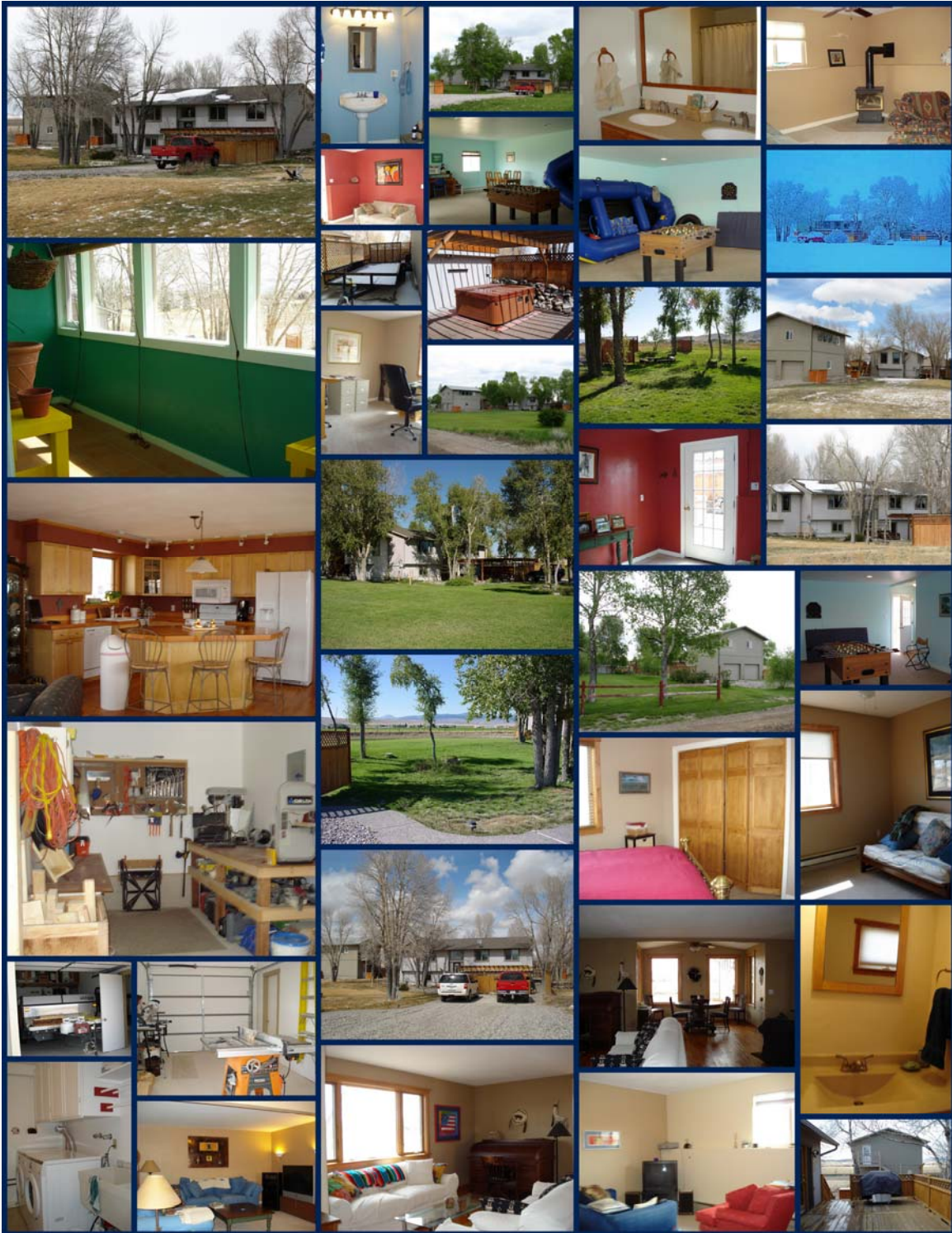
Average Gas: \$69.08/month



Property Listed by Vana Taylor
Cell (406) 925-1989



462 Beaverhead Lane Dillon, Montana



This document prepared from sources deemed reliable; however, Bramlette and Company Realtors of Dillon, Montana does not guarantee accuracy.

8 S. Idaho - PO Box 230 - Dillon, MT 59725
www.bramlettecompany.com

Phone 406-683-4316
Fax 406-683-9836