

**3151 Steel Creek Road**  
Wisdom, Montana

**Offered at ~~\$425,000~~**

**Price reduced to \$375,000!**

This super horse property encompasses 20± improved acres in the beautiful Big Hole Valley. It features a 1,716± square foot, 3 bedroom, 2 bathroom home as well as awesome views of the valley and is a perfect setup for your animals.

In addition to being fenced and cross fenced, this horse haven offers a livestock barn with individual stables, corrals, and horse run that leads to the fenced pasture. All sagebrush has been mowed so grass is plentiful. An equipment barn is also situated on the property and is excellent space for storing tools, machinery, or hunting gear.

The home has a good sized kitchen that overlooks the dining area and could accommodate a family or be set up as a hunting headquarters. A spacious living room features a gas fireplace and there are vaulted ceilings throughout the home. Conveniently, the property is close to Beaverhead National Forest and the Big Hole River. The nicely landscaped lawn is equipped with underground sprinklers and offers potential for a garden.

2008 Taxes: \$1,148.58

Average Electric: \$107.72/month

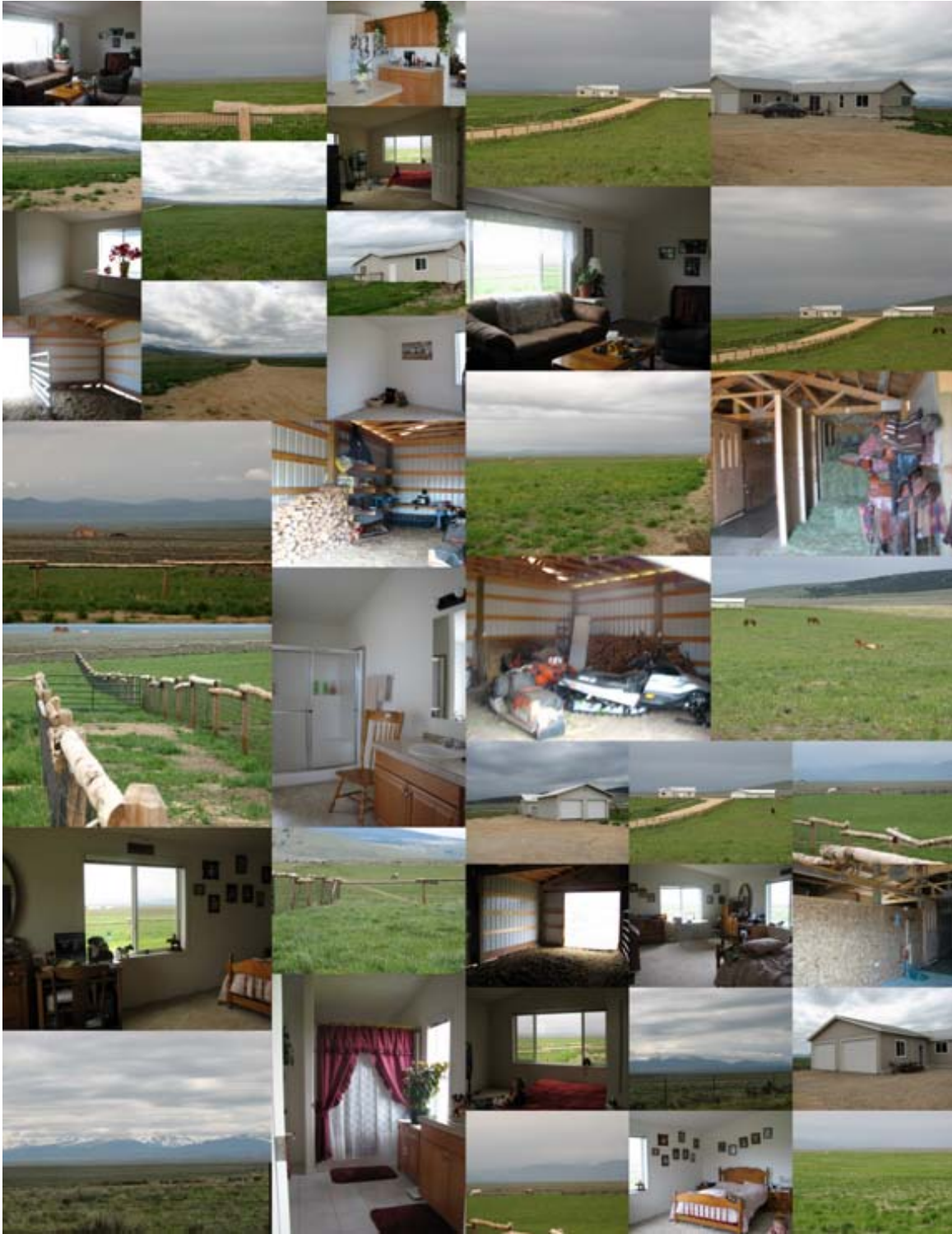


**Property Listed by Vana Taylor**  
**Cell (406) 925-1989**



# 3151 Steel Creek Road

## Wisdom, Montana



This document prepared from sources deemed reliable; however, Bramlette and Company Realtors of Dillon, Montana does not guarantee accuracy.

8 S. Idaho - PO Box 230 - Dillon, MT 59725  
[www.bramlettecompany.com](http://www.bramlettecompany.com)

Phone 406-683-4316  
Fax 406-683-9836