

Sweetwater Estates

Phase III — Dillon, Montana



**Property Listed by Vana Taylor
Cell 406-925-1989**

Setting a standard in Southwest Montana, this is the place you want to be!

14 beautiful building lots ranging in size from 1 to 6 acres. Offer incredible views of several mountain ranges with easy access to town. This area boasts some of the finest home-sites in Dillon.

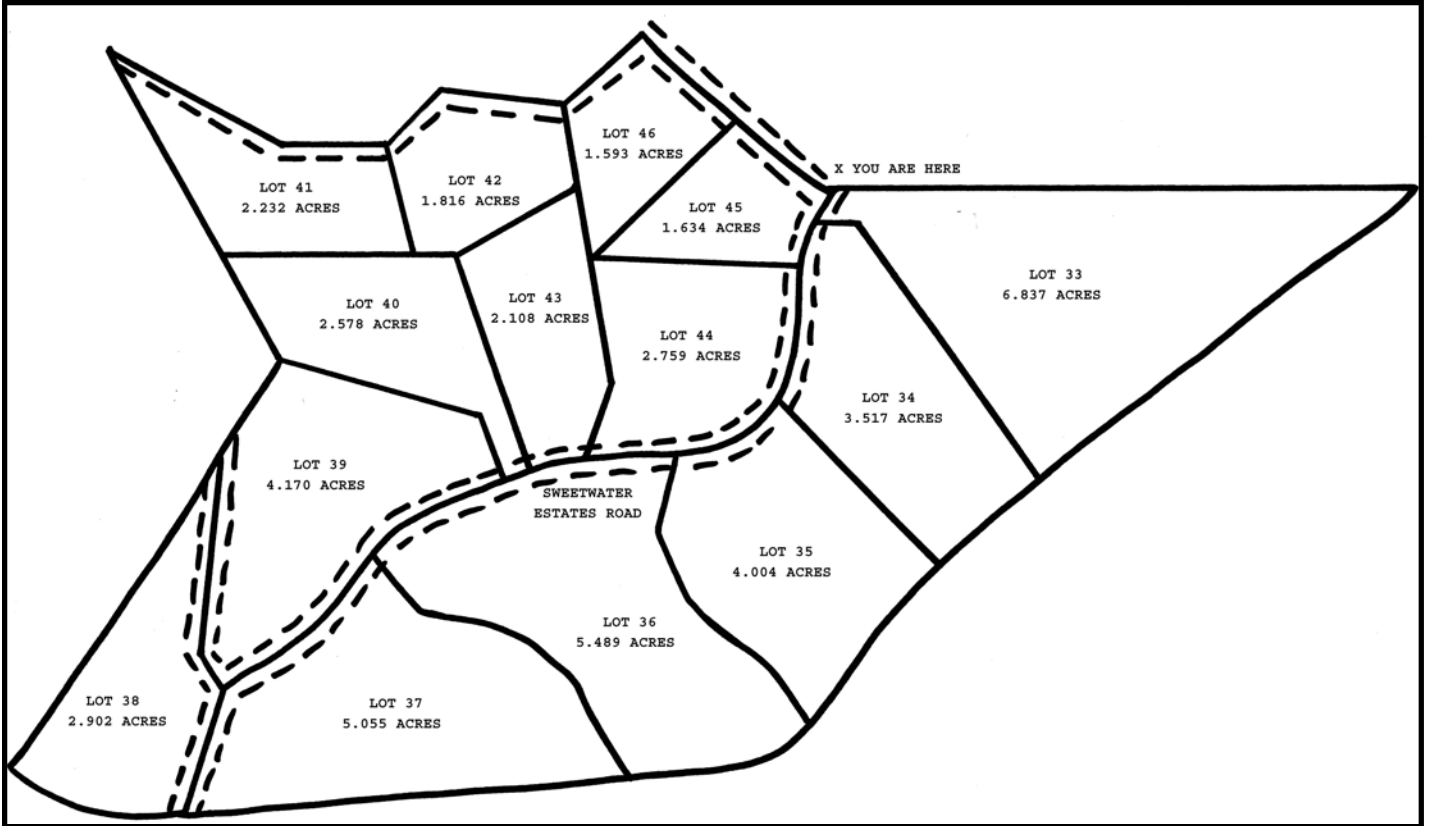
Spectacular views of the Blacktail, Sweetwater, Ruby, Tobacco Root, and Pioneer Mountain Ranges call out to you in one of Dillon's premiere subdivisions.

Sweetwater Estates III conveys sweeping meadow lots with some decline and varied topography. Privacy, an easy commute to Dillon, and covenants to protect homeowners.

These building lots are DEQ approved and have electric and phone to the lot line as well as many more amenities. Through preliminary plat approval, so reserve your lot today!

Sweetwater Estates

Phase III



| Lot | Acres | Price | Status | | Lot | Acres | Price | Status |
|-----|--------|-----------|--------|--|-----|--------|-----------|--------|
| 33 | 6.837± | \$154,900 | Active | | 40 | 2.578± | \$57,900 | Active |
| 34 | 3.517± | \$72,900 | SOLD | | 41 | 2.232± | \$119,900 | Active |
| 35 | 4.004± | \$69,900 | Active | | 42 | 1.816± | \$59,900 | Active |
| 36 | 5.489± | \$72,900 | Active | | 43 | 2.108± | \$55,900 | Active |
| 37 | 5.055± | \$139,900 | Active | | 44 | 2.759± | \$59,900 | Active |
| 38 | 2.902± | \$56,900 | Active | | 45 | 1.634± | \$59,900 | Active |
| 39 | 4.170± | \$59,900 | Active | | 46 | 1.593± | \$57,900 | Active |

This document prepared from sources deemed reliable; however, Bramlette and Company Realtors of Dillon, Montana does not guarantee accuracy.

8 S. Idaho - PO Box 230 - Dillon, MT 59725
www.bramlettecompany.com

Phone 406-683-4316
Fax 406-683-9836